



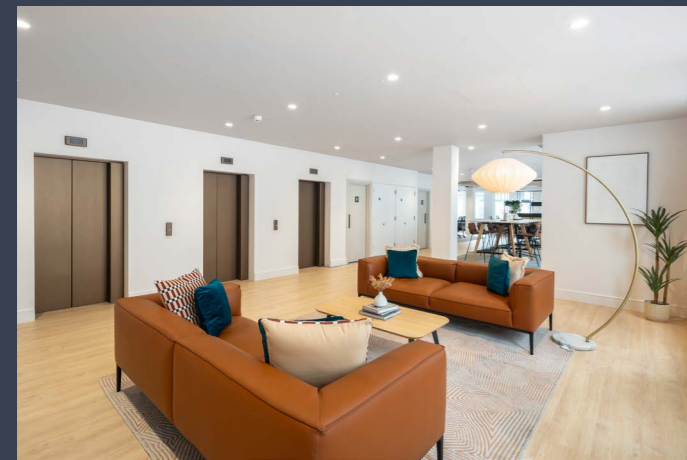
**GRACECHURCH STREET  
LONDON EC3**



**4,677 SQ FT / 434 SQ M  
NEW FULLY FITTED OFFICES**

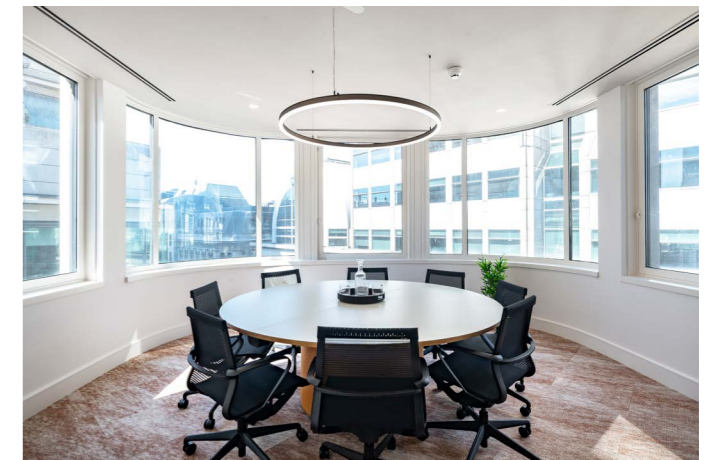


**NEWLY REFURBISHED,  
FULLY FITTED OFFICES  
WITH DIRECT ACCESS TO  
LEADENHALL MARKET**



## CONTEMPORARY OPEN PLAN WORKSPACE

The 6th floor is newly refurbished to provide a fully fitted and furnished workspace, finished to an exceptional standard and ready for immediate occupation.



## AMENITIES

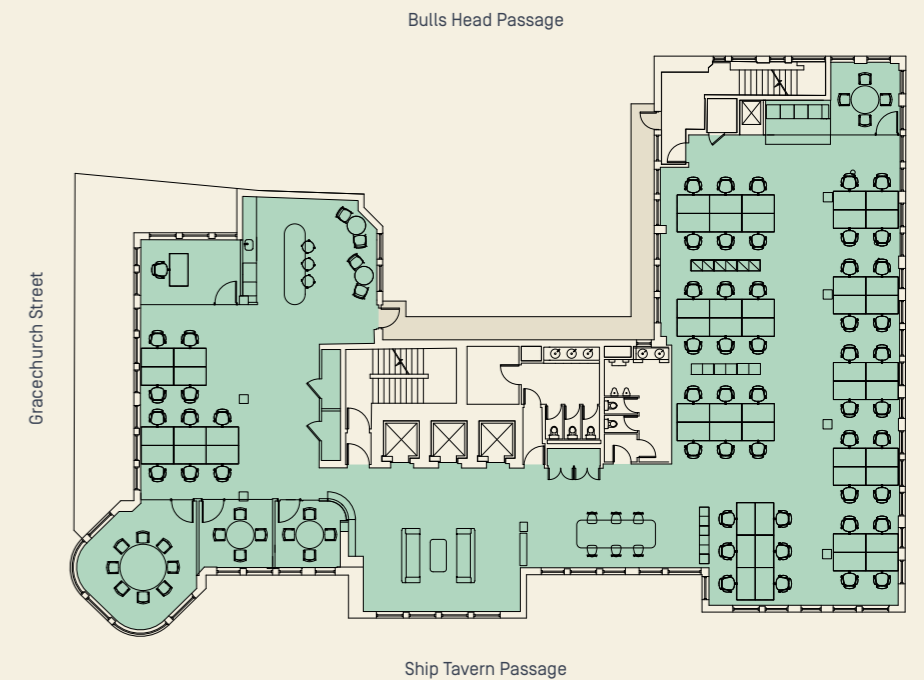
-  Newly refurbished double height reception
-  3 x 10 person passenger lifts
-  New WCs
-  New metal tile and plasterboard suspended ceiling
-  New VRF air-conditioning
-  LED lighting
-  EPC A rating
-  Secure cycle storage
-  Shower and locker facilities
-  Newly fitted to Cat B, with furniture and cabling
-  Live internet connectivity
-  F45 gym





## 6TH FLOOR PLAN

4,677 SQ FT / 434 SQ M

Open plan desks	54
Executive office	1
8 person meeting room	1
4 person meeting room	3
Collaboration areas	1
Reception	1
Breakout area / teapoint	2



 Floor  Core  
For indicative purposes only.  
Not to scale.

# A PRIME CITY LOCATION WITH EXCELLENT CONNECTIONS

Gracechurch Street is located between the Bank of England and Lloyd's of London and provides a key link from London Bridge and Monument in the south to Bishopsgate in the north.

The building is well served by a wide range of retail, leisure and restaurant amenities in the immediate locality.



## MONUMENT



## BANK



## FENCHURCH STREET



## CANNON STREET



## LIVERPOOL STREET



All journey times taken from the building. Source: TfL



## FURTHER INFORMATION

**Jonathan Beilin**  
07976 392 016  
jb@newtonperkins.com

**Leo Gough**  
07546 695 274  
lg@newtonperkins.com

A development by

**NEWTON PERKINS**

**AVERY**  
REAL ESTATE

[77GRACECHURCHSTREET.COM](http://77GRACECHURCHSTREET.COM)

Newton Perkins LLP for themselves and for the vendors or lessors of this property whose agents they are, give notice that:- a. the particulars are set out as a general outline only for guidance and do not constitute, nor constitute part of, an offer or contract; b. all descriptions, dimensions, references to condition and necessary permissions for use and occupation, and other details are believed to be correct, but any intending purchasers, tenants or third parties should not rely on them as statements or representations of fact but satisfy themselves that they are correct by inspection or otherwise; c. All properties are measured in accordance with the RICS property measurement, 1st Edition May 2015 (incorporating IPMS) unless designated NIA/GIA/GEA, in which case properties are measured in accordance with the RICS Code of Measuring Practice (6th Edition); d. Any images may be computer generated. Any photographs show only certain parts of the property as they appeared at the time they were taken. May 2026.